



## August 18th Meeting Agenda

**Place:** Nuvera  
**Location:** 129 Concord Rd  
Building 1  
Billerica, MA 01821

- 5:30-6:00pm Sign in and network with other users. Food and refreshments
- 6:00-6:15pm Opening statement from BASWUG Committee
- 6:15-7:30pm *PhotoView360 by Rob Rodregues*
- 7:30-7:45pm Break
- 7:45-9:00pm *Plastic Part Design by Julie Napolitan*
- 9:00-9:15pm Announcements for next meeting & upcoming events  
Questions, comments, and prizes  
Close meeting

[Page 2 Directions to 129 Concord Rd Building 1](#)

[Page 3 Parking overview and the entrance at 129 Concord Rd Building 1 for the meeting](#)

Meeting sponsored by:

**SolidWorks**  
**User Group Network**  
Become part of the **COMMUNITY**





## Directions to 129 Concord Rd

The map below shows the location of Nuvera located on Concord Rd Billerica, MA

### **From the North on Route 3**

Route 3 North.

Take exit 27 and merge onto Concord Road toward Billerica.

Take a left at 129 Concord Road, also called Rivertech Park.

End at Building 1.

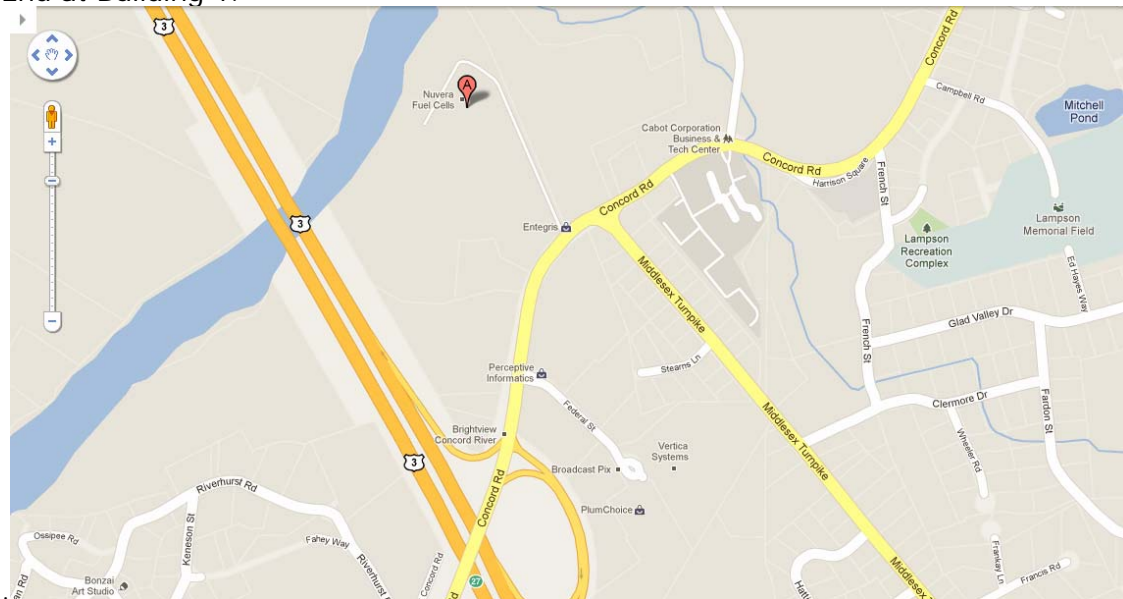
### **From the South on Route 3**

Route 3 South.

Take exit 27 and merge onto Concord Road toward Billerica.

Take a left at 129 Concord Road, also called Rivertech Park.

End at Building 1.



If you get lost and need to contact someone that night Call (781) 258-2203

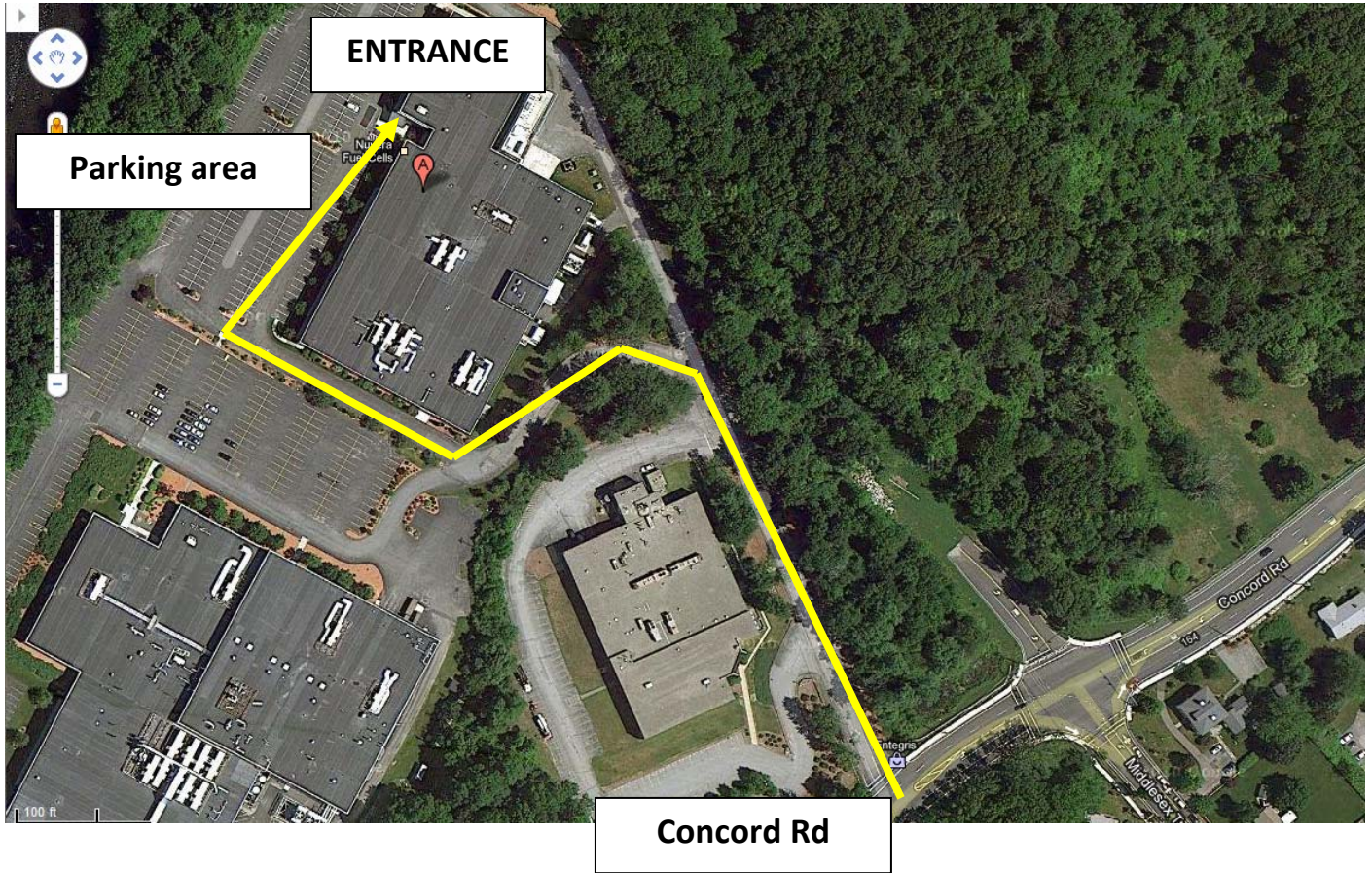
Meeting sponsored by:

**SolidWorks**  
**User Group Network**  
Become part of the **COMMUNITY**





# Boston Area SolidWorks User Group



Meeting sponsored by:

**SolidWorks**  
**User Group Network**  
Become part of the **COMMUNITY**

